



# AQUARIUM HANG-ON FILTER WITH UV 500-HO+ / 800-HO+

-  **FILTRE SUSPENDU À LAMPE UV**
-  **FILTRO APPENDIBILE PER ACQUARIO CON UV**
-  **FILTRO COLGANTE PARA ACUARIO CON UV**
-  **AQUARIUM AUFHÄNGEFILTER MIT UV**



To ensure your new hang on filter is set up and running correctly, and to prevent any accidental damage or injury, please read and follow the below instructions carefully before using your product.

## SAFETY

**Important! Disconnect the mains electricity supply before attempting any installation / maintenance of any kind. Do not attempt to modify this unit in any way and only use the recommended parts for replacement.**

- The hang on filter should never be run dry as this will cause the unit to overheat and cause permanent damage.
- All connections must be earthed.
- The power cord of this appliance cannot be replaced; if the cord is damaged, the appliance should be discarded. Never cut the cord.
- Do not connect to any voltage other than that stated.
- This filter is suitable for indoor household aquariums only (do not use in exterior locations, swimming pools, ponds, bathrooms etc). Do not place in liquids other than water.
- Do not use with water above 90F or 30C.
- Do not carry or pull the unit by its electrical cable.
- Do not use this unit if it has a damaged cord or plug, if it is malfunctioning or it is dropped or damaged in any manner
- Do not yank cord to pull plug from outlet. Grasp the plug and pull to disconnect. Always unplug an appliance from an outlet when not in use.
- Do not attempt to modify this unit in any way and only use the recommended parts for replacement.
- Before installing, maintaining or handling your equipment, or before placing your hands in your aquarium, ensure that the unit is disconnected from the electricity supply.
- Always unplug any electrical devices when not in use.
- Carefully examine your filter after installation. Do not plug in the unit to the mains if there is water on any parts not intended to be wet.

- The power cable must have a drop loop to avoid any condensation build up reaching the mains (see diagram 1). If the plug does get wet, DO NOT unplug the cord. Disconnect the fuse or circuit breaker that supplies power to the appliance. Then unplug and examine for presence of water in receptacle.

- When positioning your hang on filter, make sure the unit is securely attached to the tank before switching it on.

- If the plug or unit does get wet, DON'T unplug the cord. First, disconnect the circuit breaker or fuse that supplies power to the appliance. Next, unplug and inspect for water presence in the receptacle.

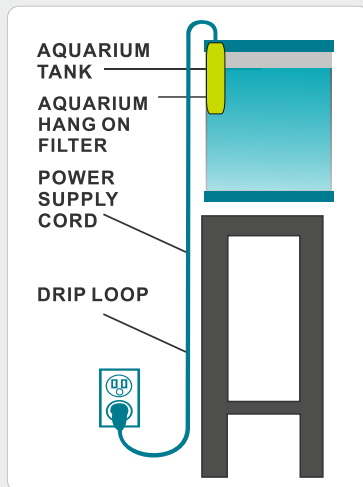
- Carefully examine your filter after installation. Do not plug in the unit to the mains if there is water on any parts not intended to be wet.

- If the unit shows any signs of water leakage, disconnect the power supply cord from the wall socket and consult All Pond Solutions or the retailer you purchased this unit from for further advice.

- If the plug or unit does get wet, DON'T unplug the cord. First, disconnect the circuit breaker or fuse that supplies power to the appliance. Next, unplug and inspect for water presence in the receptacle.

- To avoid injury, do not touch hot or moving parts such as, but not limited to, heaters, reflectors, UV bulbs or impellers.

Diagram 1



**Please note** – this appliance can be used by children aged from 8 years and above and persons with reduced physical, sensory or mental capabilities or lack of experience and knowledge, provided they are given supervision and instruction concerning use of the appliance and understand the hazards involved. Children must not play with the appliance. Any maintenance must not be made by children without supervision.

## ELECTRIC

This unit comes complete with a generous supply of 3 core cable, however should any additional cable be required, the use of an approved waterproof cable connector with a proper rating is essential. A cord rated for less amperes or watts than the appliance rating may overheat.

### Please Ensure:

- The power supply must be earthed and fused at 3amps.
- You regularly inspect the cable for damage and deterioration.
- Do not connect to any voltage other than that stated.
- You consult a qualified electrician if in doubt about any aspects of wiring.

**Important:** The power supply must be earthed and fused at 3amps. Regularly inspect the cable for damage and deterioration. Consult a qualified electrician if in doubt about any aspects of wiring.

## INSTALLATION & USE

Please read the below instructions carefully before beginning to set up your filter. **DO NOT CONNECT THE UNIT TO THE MAINS UNTIL SET UP IS COMPLETE AND UNIT IS FILLED WITH WATER.**

### Important installation information:

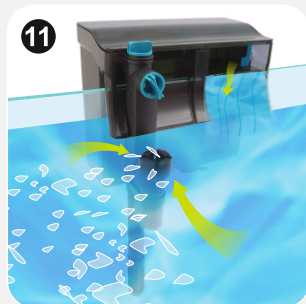
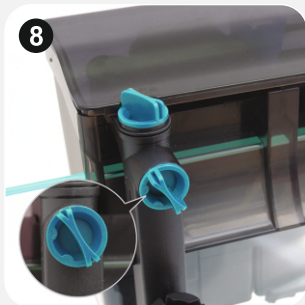
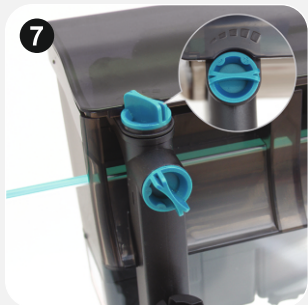
- When installing your filter, the minimum water level in the tank should be no more than 6 cm (2.25 inches) below the aquarium rim.
- The inlet pipe should **NOT** be positioned too close to an air stone, aeration device or the output valve to avoid reducing the effectiveness of the filter.

Firstly, unpack the unit and identify all parts using the parts diagram in this instruction manual.

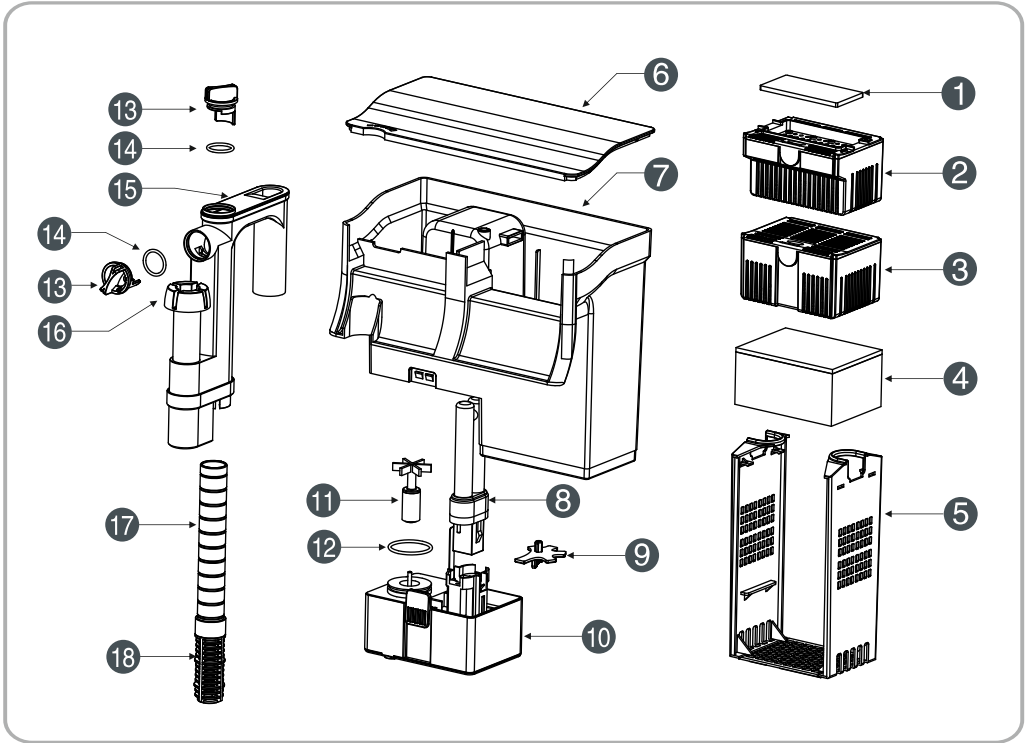
- 1 Remove the filter from the box. Wash the floss filter pad and filter foam with water from your tank. **Important** - do not use mains water or any cleaning products to clean your filter media.

Additional filter media to add into the media baskets not included.

- 2 Insert the telescopic pipe and inlet tube into the filter body. Ensure that all connections are clicked into place as far as they will go. *(image 1, 2)*
- 3 Position the filter in your aquarium, ensuring that the water level is high enough to submerge all inlet points and piping connections. Ensure that the surface skimmer is positioned below the water level, allowing it to collect surface debris and avoid air intake into the unit. *(image 3)*
- 4 Place the floss filter pad, filter foam and your filter media baskets into your media holder and insert into the filter body. *(image 4)*
- 5 Adjust the balance plate so that your filter is level in your aquarium, sitting in a vertical position. *(image 5)*
- 6 Fill the filter body with tank water to allow the unit to prime efficiently. To avoid priming problems, ensure water level is high enough to submerge ALL inlet points and piping connections. Switch on the unit. *(image 6)*
- 7 Rotate the top flow rate adjuster to increase or decrease the water intake from the filter body. For the initial start-up and to prime the filter more quickly, rotate the flow rate adjuster to maximum. Once priming has been completed, you can re-adjust the water flow rate to your desired output level. *(image 7)*
- 8 Rotate the side flow rate adjuster to increase or decrease the water intake from the surface skimmer. *(image 8)*
- 9 Switch on the UV steriliser at the back of the filter body. *(image 9)*
- 10 Once switched on, the UV indicator light on the top of the filter body will be lit. *(image 10)*
- 11 Once operating, the water will enter the unit via the inlet tube until the system is fully primed and exit via the waterfall outlet. *(image 11)*



# PARTS DIAGRAM



1	FLOSS FILTER PAD	10	MOTOR
2	MEDIA BASKET 1	11	IMPELLER
3	MEDIA BASKET 2	12	IMPELLER O-RING
4	FILTER FOAM	13	FLOW RATE ADJUSTER
5	MEDIA HOLDER	14	FLOW RATE ADJUSTER O-RING
6	FILTER COVER	15	INLET TUBE
7	FILTER BODY	16	SURFACE SKIMMER
8	UV BULB	17	TELESCOPIC PIPE
9	BALANCE PLATE	18	INLET PIPE

# MAINTENANCE

To ensure optimal performance and that your unit functions correctly, regular maintenance is essential. Failure to do so may result in damage to your unit and may invalidate your warranty.

We recommend that a regular cleaning and maintenance schedule is followed to ensure responsible fishkeeping. Depending on water volume and stocking levels, regular cleaning of the filter media, foams, impeller, inlet/outlet pipework during a 10-25% water change will help ensure that the product works efficiently and the aquarium remains healthy.

For further maintenance guidance, please see the table and additional information below:

	<b>1 MONTH</b>	<b>3 MONTHS</b>	<b>6 MONTHS</b>	<b>ANNUALLY</b>
<b>Impeller</b>	Clean & Inspect			Replace
<b>Ceramic Shaft</b>	Clean & Inspect			Replace
<b>All Pipework</b>	Clean & Inspect			
<b>Green Hose</b>				Clean & Inspect
<b>Priming Button</b>			Lubricate & Clean	
<b>O-Rings</b>	Clean & Inspect	Lubricate & Clean		Replace
<b>Filter Foams &amp; Other Media</b>	Clean & Inspect		Replace	
<b>UV Bulb</b>			Replace	
<b>Quartz Sleeve</b>			Clean & Inspect	Replace after 2 years

## O-rings

It is vital that o-rings are regularly inspected and replaced as the rubber watertight seal will perish over time, which may cause your canister to leak. Before replacing your o-rings, ensure they are well lubricated.

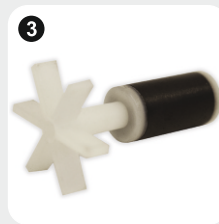


## Impeller and Shaft

A clogged impeller is often the primary cause of all filter faults, so it is extremely important to clean and inspect your impeller every month to ensure it is functioning correctly and remove any debris. Keeping the impeller clean will improve the performance of your filter and lengthen the life of the motor. The impeller itself is a perishable part and will be subject to wear and tear overtime. As a result, it is also very important to replace your impeller and ceramic shaft annually.

- 1 Switch off your filter at the mains and unplug the unit. Pour out water from inside the HO+ filter.
- 2 Remove your HO+ filter from your aquarium.
- 3 Detach the motor from the filter unit by gently squeezing both pressure points on either side of the motor, pulling the motor downwards at the same time. (*image 1*).
- 4 Lay the motor on a flat surface with bulb facing upwards. (*image 2*)
- 5 To clean the impeller, remove the base of the motor and clear any debris or residue. The impeller 'fan' piece should rotate half way and stop. If it can rotate completely 360 degrees then the impeller is damaged and will need replacing. (*image 3*)
- 6 Reattach the motor to the filter unit, taking care to guide the metal pin back into the hole for the UV bulb. You should hear the motor click into place. (*image 4*)
- 7 Return your filter into your aquarium and switch back on.

**Note:** Handle the ceramic shaft with care as this can break very easily during the cleaning process.



## Maintaining & Replacing the UV Bulb

**Important!** Never look directly at the UV light - the filter's safety switch will turn the bulb off when you remove the motor, but always unplug your filter before removing it as a precaution.

- 1 Follow steps 1-4 from Impeller and Shaft maintenance section.
- 2 To remove the UV bulb, hold the base of the bulb and firmly pull upwards to remove from the socket. (image 5)
- 3 Add your replacement bulb and follow step 6 and 7 of Impeller and Shaft maintenance section.



## Filter Maintenance

In general, it is recommended to disconnect your filter and clean the pipes, impeller and filter media monthly. Pipework will become blocked with waste and protein slime over time, so regular cleaning using a filter stem brush is important for optimal performance.

The frequency of how often you will need to clean and inspect your unit of course will depend on a lot of factors like how dirty the water is when you first start using your filter, the volume of your water and also how many fish you have. How often you feed your fish and how long your lighting is on for will also affect how quickly your aquarium water gets dirty and will need to be taken into consideration when planning how often to clean your filter.

To clean the outside of the filter, you can periodically wipe with a damp cloth (use a cloth dampened with water from your aquarium, never use any chemical products or detergents). Lemon juice can also be used to removing any limescale build-up. Rinse thoroughly afterwards to remove any acidic residue.

## Flow Rate Adjuster

Sometimes delicate fish and plants require a gentler water flow. The filter's flow rate adjuster allows you to slow the flow of water whilst maintaining filtration efficiency. When the flow rate is decreased, up to 50% of water within the filter chamber is re-filtered several times, purifying the water further and creating a clean and clear aquarium.

It is also recommended to reduce the water flow rate during feeding. This results in greater food consumption and less waste.

## Filter Media

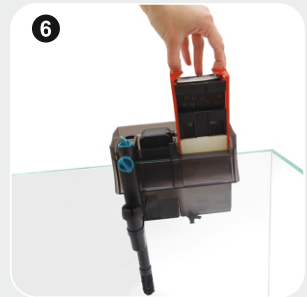
**Important!** Always use water from your fish tank to clean your filter media.

When cleaning mechanical or biological media, **NEVER** rinse with tap water or use any soap or detergent, only your aquarium water. The best time to rinse your filter media is when doing a 10 / 20% water change as you can use this water to wash the media through.

When replacing media in your filter, do not replace more than 50% of your media at once. This is to ensure that the nitrifying bacteria present in the old media are able to repopulate in the newly added filter media.

**Important** - Always use water from your fish tank to clean your filter media - do not use mains water or any cleaning products to clean your media.

- 1 Switch off your filter at the mains and unplug the unit. Pour out water from inside the HO+ filter.
- 2 Lift the filter cover and remove the red media holder from the filter. (image 6)
- 3 Wash the floss filter pad, filter foam and any additional basket media with water from your tank in a bowl. Gently squeeze the floss filter pad and filter foam to remove any build up - this will not remove all of the beneficial bacteria that is on the sponge, which is what is protecting your fish from ammonia in the water, so you can wash the sponge until the water moving through it runs clear.
- 4 Replace your media into the holder and return it into your filter. Put the filter cover back onto the top of your filter.
- 5 Switch your filter back on.



## TROUBLESHOOTING

### The Water in my Aquarium is Dirty

#### Causes:

- The beneficial bacteria have not yet established in your new filter.
- Your filter is not the correct size for your aquarium set up.
- You have too many fish for your size filter.
- Your filter media may be dirty.

#### Solutions:

- Your fish tank can take up to 3 weeks to successfully cycle. You may also want to add a bacteria start treatment to your tank to speed up this process.
- You may need to upgrade to a larger filter.
- For reference, you should allow 1 gallon of water per 1 inch of fish in your aquarium.
- Follow the instructions in the Filter Media Maintenance section above.
- If you have not yet done so, you may also need to carry out more regular water changes in your tank.

### My UV Light is not on

#### Causes:

- Your filter UV has not been switched on.
- The UV bulb may be burnt out.
- Your UV steriliser switch may be set to the off position.

#### Solutions:

- Check your filter is plugged into the mains and is switched on.
- Replace your 5w UB bulb (see maintenance section above).
- Check that the UV steriliser switch at the back of the filter is set to ON.

### No Water is Coming Out of my Filter

#### Causes:

- The impeller is blocked - please refer to the impeller maintenance section above.
- There is no water in the filter body.
- The filter is not switched on.
- The inlet pipe is clogged.

## Solutions:

- Use a small jug and scoop some water from the surface of your tank and pour into the filter body.
- Check your filter is plugged into the mains and is switched on.
- Remove the filter from your tank and clean the inlet pipe.

**If none of the troubleshooting advice above resolves your issue, or you required spare parts for your HO+, please contact the supplier of your HO+ system.**

## WARRANTY

The All Pond Solutions hang on filter range is guaranteed against defects in material or workmanship under normal aquarium usage and comes with 12 months warranty for all electrical parts. The warranty period commences from the date of purchase.

If you require support on how to use your unit, replacement parts or if your filter develops a fault during the warranty period, please contact the supplier of your unit.

Non-replaceable, non-perishable and non-serviceable parts will be repaired or replaced free of charge, once the unit is returned with all components along with a valid proof of purchase and postage paid. We reserve the right to replace or repair the unit at our discretion.

Please be aware that perishable parts that are subject to normal wear and tear, such as impellers, impeller covers, motor seals and UV bulbs, are not covered by your warranty and a charge may be required for replacements of these.

This warranty does not apply to any unit that has been subjected to misuse, accidental damage, negligence, tampering or customisation. It does not apply to units which have been assembled incorrectly, improperly maintained, or where the instructions and safety information in this manual has not been followed correctly.

No liability is assumed with respect to loss or damage to livestock or personal property irrespective of the cause thereof.

Please ensure that only genuine All Pond Solutions components are used when completing a replacement or repair. Spare parts are available at our official website or from your local supplier.

Before returning your unit under warranty terms, check that all setup and maintenance instructions have been correctly followed. If you are in doubt, please contact your local aquatic retailer for further advice before returning the product.

**This does not affect your statutory rights.**

## SPECIFICATIONS

<b>MODEL</b>	500-HO+	800-HO+
<b>FLOWRATE</b>	500L/h	800L/h
<b>UVWATTAGE</b>	5w	5w
<b>TOTAL WATTAGE</b>	11w	11w
<b>VOLTAGE</b>	200–240v	200–240v
<b>SUITABLE AQUARIUM SIZE</b>	38–115 Litres	75–190 Litres
<b>DIMENSIONS</b>	192x110x5x165cm	229x127x5x179cm





[www.allpondsolutions.co.uk](http://www.allpondsolutions.co.uk)

**All Pond Solutions Ltd**  
Unit 203 Riverside Way, Uxbridge, Middlesex,  
England UB8 2YF