



AllPondSolutions

AQUARIUM INTERNAL FILTER

INSTRUCTION MANUAL

600-IFC

900-IFC

1500-IFC



INSTALLATION

The IFC filter can be installed as followed.

- ① Remove the IFC and all parts from its packaging.
- ② Ensure all of the IFC's filter casing parts are attached correctly.
- ③ Attach the 'suction cups' to the 'suction cup plate', and then the 'suction cup plate' to the back of the IFC 'pump'.
- ④ Insert the 'outlet' in the hole at the front of the 'pump' (tighten with the 'outlet nut' on the 1500-IFC).
- ⑤ Decide on using your IFC with or without the venturi air pipe feature. If your aquarium already has an air pump installed you may decide against this feature and use only the IFC's filtration function.
To use this feature attach the 'venture pipe' to the 'air intake valve' and 'intake valve plug', then attached the end of the 'venturi pipe' to the top of the 'outlet'.
The 'air intake valve' must be out of the water so it can pull air in for this feature to work correctly.
- ⑥ Position the flow rate adjuster to the left so it is at its lowest setting.
- ⑦ Fully submerge the IFC in the aquarium water and position it as required.
- ⑧ Plug the IFC in at the mains (ensure you have a drip loop – see *image 2*), switch on the IFC.
- ⑨ Observe the strength of the IFC and decide if this is correct for your fish tank.
If it is not switch off the IFC at the mains and then move the flow rate adjuster to the right slightly.
- ⑩ Re-position the IFC in the aquarium, switch on the IFC, and repeat step 9 until you the strength of the IFC is correct.

Please Note:

When setting up your IFC you will be placing your IFC in water and also turning on the IFC at the mains. During each step please ensure you thoroughly dry your hands to avoid electric shock.

MAINTENANCE

Decide on how regularly you would like to maintain your IFC filter, dependant on your water volume and how many fish you are keeping. The best time to clean your filter is when completing a 10% water change, as you use the aquarium water you are discarding to clean all parts of your IFC filter.

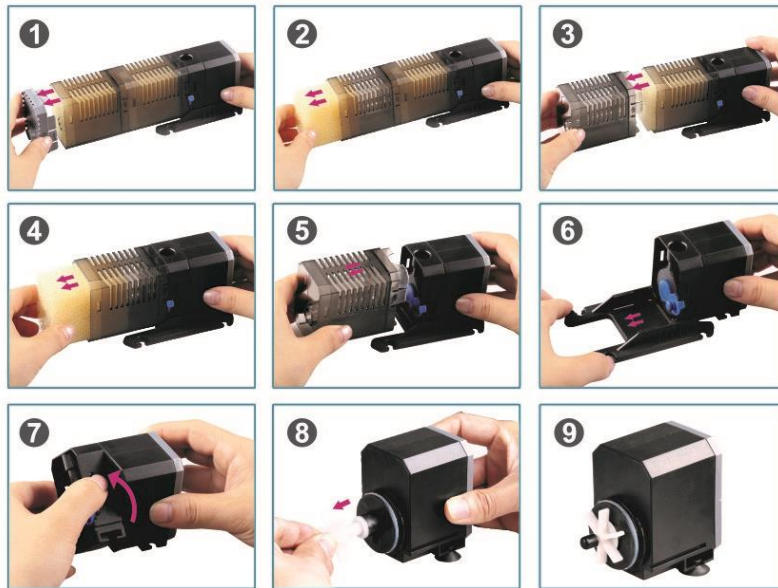
When cleaning your IFC, you should wash all parts but specifically the following parts, using the water from your aquarium:

- ① Impeller, Shaft, Impeller Rubbers (and inside pump where these parts are housed)
- ② Outlet parts
- ③ Filter foam and all filter casing parts.

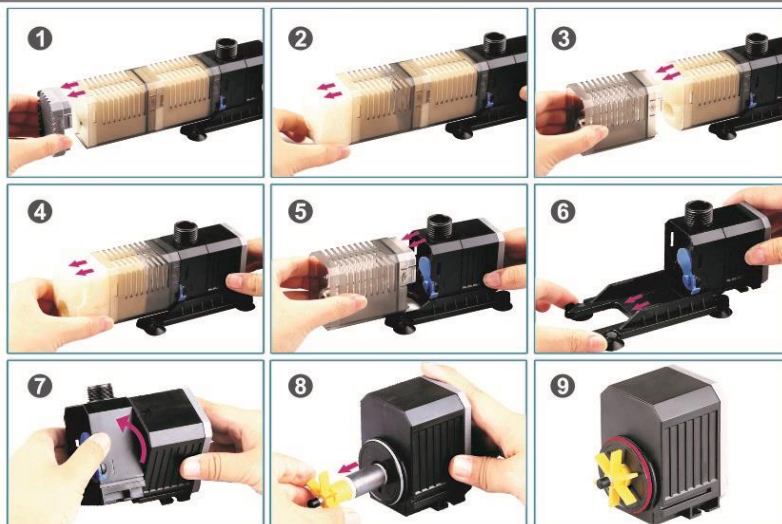
ACCESSING THE IMPELLER HOUSING

- 1 Press buckle to remove the 'Filter Bottom'
- 2 Remove the 'Filter Foam' to replace / clean
- 3 Press buckle to remove the 'Filter Casing'
- 4 Remove the 'Filter Foam' to replace / clean
- 5 Press buckle to remove the 'Filter Casing'
- 6 Remove 'Suction Cup Plate' by sliding clear of 'Pump'
- 7 Remove 'Pump Casing' by turning counter clockwise
- 8 Remove the 'Impeller' and 'Shaft' to replace / clean
- 9 Make sure 'O-Ring' is always present (as shown in image)
- 10 Replace all parts in reverse order

600-IFC/900-IFC



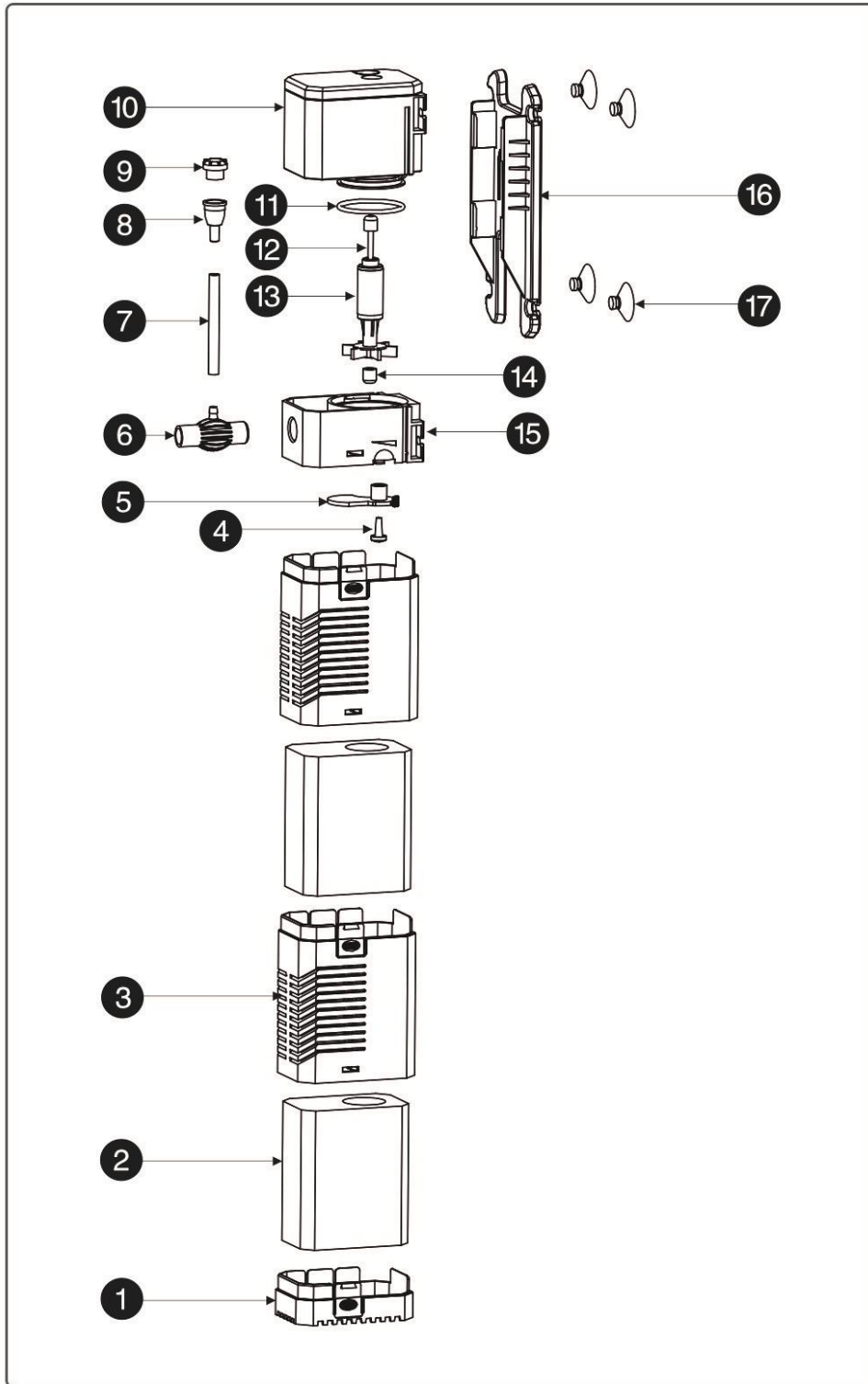
1500-IFC



ELECTRIC

The pump comes complete with a generous supply of 3 core cable, however, should any additional cable be required then the use of an approved waterproof cable connector is essential.

- The power supply must be earthed and fused at 3amps.
- Regularly inspect the cable for damage and deterioration.
- Consult a qualified electrician if in doubt about any aspects of wiring.



PARTS DIAGRAM

1 FILTER BOTTOM

2 FILTER FOAM

3 FILTER CASING

4 FASTENING JOINT

5 FLOW RATE ADJUSTER

6 OUTLET

7 VENTURI PIPE

8 AIR INTAKE VALVE

9 INTAKE VALVE PLUG

10 PUMP

11 O-RING

12 SHAFT

13 IMPELLER

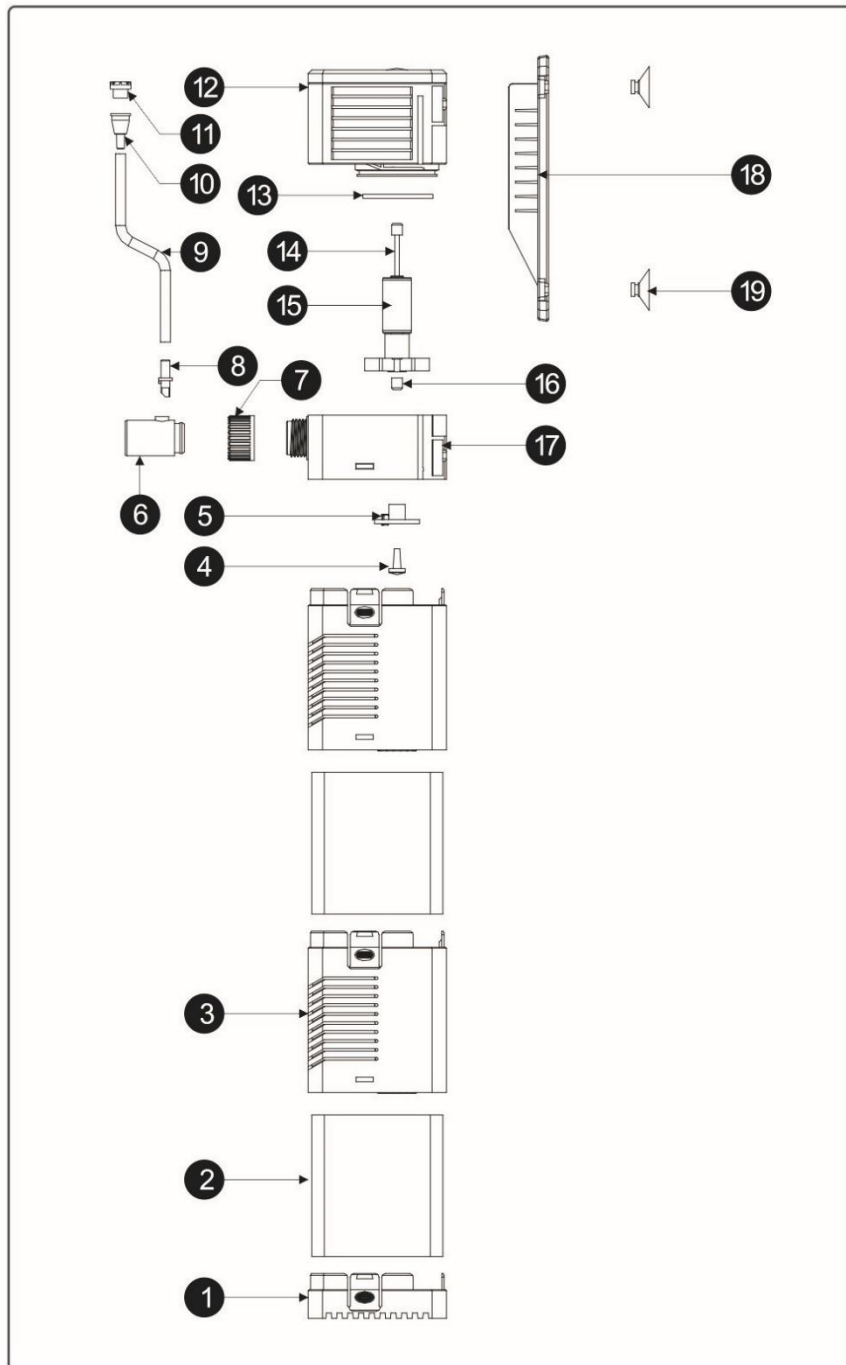
14 IMPELLER RUBBERS

15 PUMP CASING

16 SUCTION CUP PLATE

17 SUCTION CUPS

1500-IFC



PARTS DIAGRAM

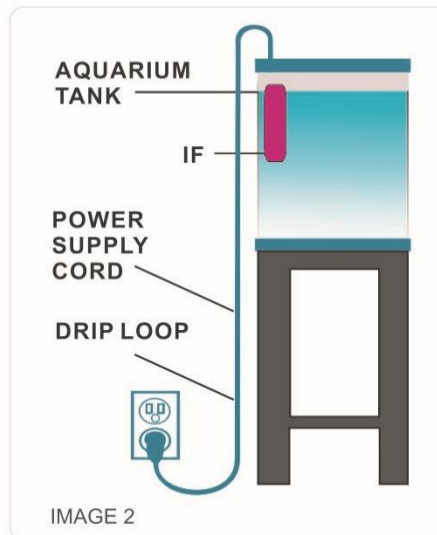
- | | |
|----------------------|---------------------|
| ① FILTER BOTTOM | ⑪ INTAKE VALVE PLUG |
| ② FILTER FOAM | ⑫ PUMP |
| ③ FILTER CASING | ⑬ O-RING |
| ④ FASTENING JOINT | ⑭ SHAFT |
| ⑤ FLOW RATE ADJUSTER | ⑮ IMPELLER |
| ⑥ OUTLET | ⑯ IMPELLER RUBBERS |
| ⑦ OUTLET NUT | ⑰ PUMP CASING |
| ⑧ VENTURI ATTACHMENT | ⑱ SUCTION CUP PLATE |
| ⑨ VENTURI PIPE | ⑲ SUCTION CUPS |
| ⑩ AIR INTAKE VALVE | |

SAFETY

IMPORTANT! Disconnect the mains electricity supply before attempting any installation/maintenance or handling of any kind.

- Only run your IFC fully submerged as shown in **image 1**.
- The IFC should never be run dry as this will cause the unit to overheat and cause permanent damage.
- Do not attempt to modify this unit in any way and only use the recommended parts for replacement.
- All connections must be earthed.
- Do not connect to any voltage other than that stated.
- Do not place in liquids other than water.
- Do not use in water above 90°F or 30°C.
- When installing your IFC you must have a drip loop to avoid condensation build up running up and down your power cable – please see the **image 2** for a detailed example of this.

IMAGE 1



SPECIFICATIONS

MODEL	600-IFC	900-IFC	1500-IFC
VOLTAGE	220-240V/50Hz		
POWER	8w	20w	25w
H-max	1.3m	1.5m	1.8m
OUTPUT	600L/h	900L/h	1500L/h

WARRANTY

Your IFC filter comes complete with a 2 year (24 months) warranty.

This covers all electrical parts, but does not cover perishable items such as the impeller, shaft, impeller rubbers and filter foam.

If you do encounter any issues with this item please consult your supplier.